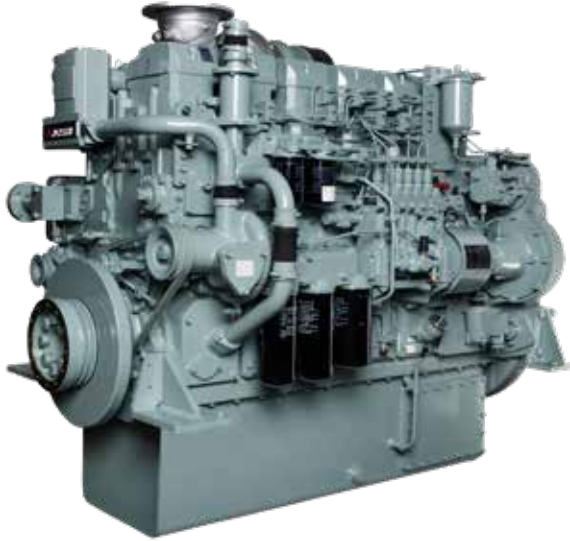


630 hp (470 kW) @ 1600 rpm Marine Diesel Engine

S6R-Y3MPTAW-3

BEST-IN-CLASS FEATURES



EPA TIER III CERTIFIED	FOR MARINE PROPULSION WITH SIMPLE AND ROBUST MECHANICAL CONTROLS
LARGE DISPLACEMENT	FOR HARD-WORKING BOATS. 29 % MORE DISPLACEMENT THAN OTHER MAJOR MANUFACTURERS ENSURES LESS STRESS ON THE COMPONENTS AND LONG, TROUBLE-FREE EQUIPMENT LIFE
EASY MAINTENANCE	NO COMPUTER NEEDED TO SERVICE THE SIMPLE AND ROBUST MECHANICAL CONTROLS. INDIVIDUAL CYLINDER HEADS AND CRANKSHAFT ACCESS PORTS ALLOW FOR A TRUE IN-FRAME OVERHAUL
RATING	MITSUBISHI RATING IS EQUIVALENT TO UNRESTRICTED CONTINUOUS RATINGS OFFERED IN NORTH AMERICA
LEGENDARY QUALITY	ENGINES ARE DESIGNED, MANUFACTURED AND TESTED IN JAPAN TO MEET THE QUALITY EXPECTATIONS OF THE DEMANDING JAPANESE MARKET

SPECIFICATIONS

COMBUSTION	4-STROKE COMPRESSION IGNITION, 14.5:1 CR
DISPLACEMENT	24.51 LITER, 6-CYLINDER INLINE
BORE X STROKE	170 X 180 MM (6.69 X 7.09 IN)
WEIGHT	DRY 2830 KG (6240 LB) / WET 3015 KG (6648 LB)
FLYWHEEL AND HOUSING	SAE #0, 18-INCH, 182-TOOTH FLYWHEEL
ASPIRATION	TURBOCHARGED, AFTERCOOLED
EXHAUST	DRY MANIFOLD
COOLING	DUAL-CIRCUIT, KEEL COOLED
OIL PAN CAPACITY	140 LITER (37 US GAL)
LUBE OIL SYSTEM	OIL COOLER, FULL FLOW + BYPASS OIL FILTER
FUEL SYSTEM	MECHANICAL, MITSUBISHI PS6 INLINE PUMP
GOVERNOR	HYDRAULIC, WOODWARD PSG
STARTING SYSTEM	24V, 7.5KW; OPTIONAL AIR START

STANDARD EQUIPMENT

COOLING:	HEAVY-DUTY JACKET WATER PUMP, OIL COOLER, THERMOSTATS
FUEL SYSTEM:	MECHANICAL FEED PUMP, FULL-FLOW FUEL FILTER
ELECTRICAL:	7.5KW STARTER, 35A ALTERNATOR, STOP SOLENOID, STARTER SAFETY RELAY
PTO:	2-GROOVE FRONT PTO PULLEY, UP TO 424kW (568 hp) DIRECT DRIVE FRONT TAKE-OFF
OTHER:	MATING FLANGES, SPARE MAINTENANCE PARTS AND TOOLS
OPTIONS:	AIR START, I/C PUMP KIT, DIGITAL DISPLAY WITH DATALOGGING, GAUGE PANELS

DISCLAIMER All information provided is believed to be correct but is not guaranteed and subject to change without notice

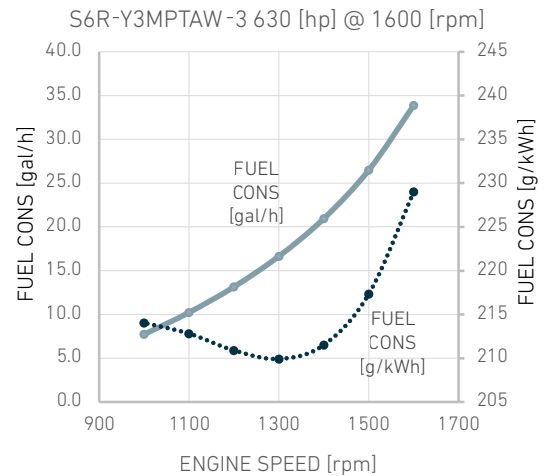
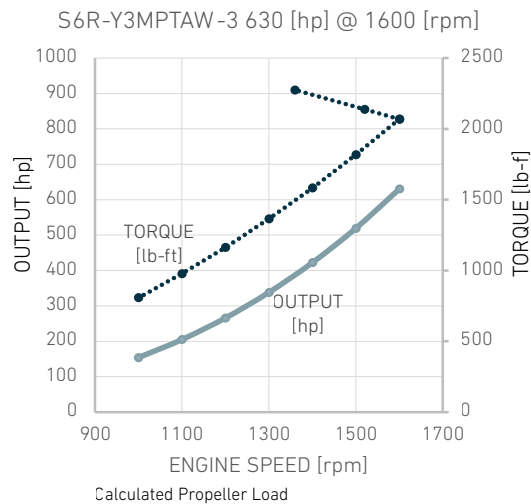
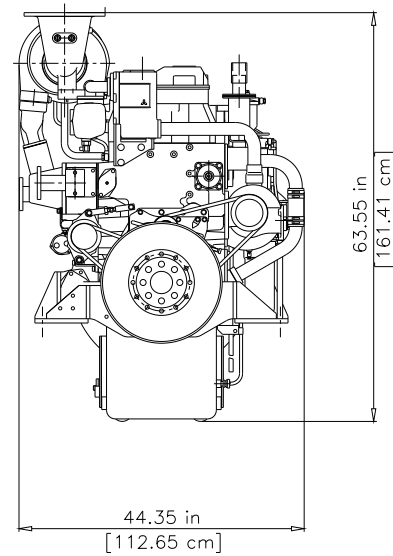
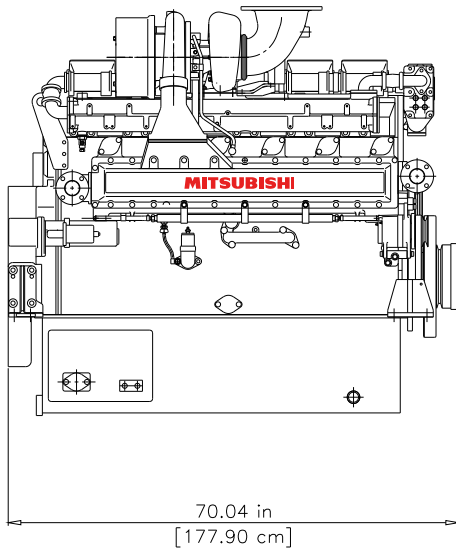
Mitsubishi Turbocharger and Engine America, Inc.

Two Pierce Place 11th Floor
Itasca, IL 60143

www.MITSUBISHI-ENGINE.com

MOVE THE WORLD FORWARD  **MITSUBISHI
HEAVY
INDUSTRIES
GROUP**

S6R-Y3MPTAW-3/ 630 hp (470 kW) @ 1600 rpm



Fuel Consumption is based on ISO3046/1 with +5% tolerance at rated power and 0.8389 fuel specific gravity

S6R-Y3MPTAW-3 630 [hp] @ 1600 [rpm]

LOAD	SPEED [rpm]	OUTPUT [hp]	TORQUE [lb-ft]
100%	1600	630	2068
82%	1500	519	1818
67%	1400	422	1583
54%	1300	338	1365
42%	1200	266	1163
32%	1100	205	977
24%	1000	154	808

S6R-Y3MPTAW-3 630 [hp] @ 1600 [rpm]

LOAD	SPEED [rpm]	FUEL CONS [gal/h]	FUEL CONS [l/h]
100%	1600	33.9	128.3
82%	1500	26.5	100.3
67%	1400	21.0	79.4
54%	1300	16.7	63.1
42%	1200	13.2	49.8
32%	1100	10.2	38.7
24%	1000	7.7	29.3
Average Fuel Consumption on ISO 8178 Cycle, Mode E3		22.2	83.9

DISCLAIMER: All information provided is believed to be correct but is not guaranteed and subject to change without notice.